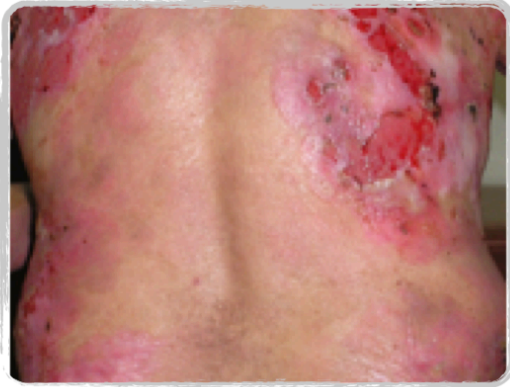


Date: 8 March 2016 8:01 pm
Topic: Pemphigus v Pemphigoid



PEMPHIGUS VULGARIS

Older adult/elderly
Flaccid bullae → break easily & crust
YES MUCOSAL INVOLVEMENT
POSITIVE NIKOLSKY
Tx: steroids
Pemphigu**S** = **Superficial**



BULLOUS PEMPHEGID

Elderly
TENSE/FIRM bullae
NO MUCOSAL INVOLVEMENT
NEGATIVE NIKOLSKY
Tx: steroids
Pemphigoi**D** = **Deeper**